

X5 SUPERLITE™

Nano Tourmaline + Ionic Ceramic Mini Professional Travel Hair Dryer



X5 Superlite Travel

- 1200 Watt output
- 2 Speed settings
- Ion technology for anti-static, smooth shiny hair
- Super light

Special feature:

- 4 solid Ceramic stones are embedded in the heating element which generate large number of negatively charged nano ions.
- Benefits of Tourmaline + Ionic Dryer:
Tourmaline + Ionic emits the largest amount of negatively charged nano ions.

This results in:

- Faster drying time.
- More moisture, sheen and softness
- No damage to hair
- Elimination of frizziness

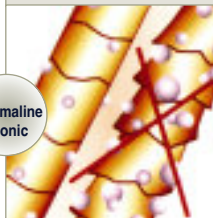
Accessories include:

- Slim concentrator nozzle for professional styling
- Travel Pouch Included

Travel
Dual Voltage
125/250V

1200W

Tourmaline
+ Ionic



Folding
Handle



Model #7018

48 Months
WARRANTY
Limited