

# X5

SUPERLITE™  
TURBO DC

# Nano Tourmaline + Ionic Ceramic

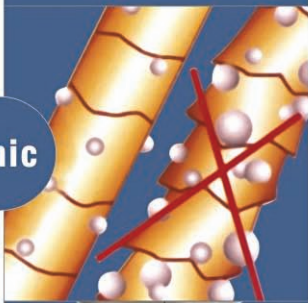
Professional Compact Hair Dryer



Model #7025

Superlite  
&  
Quiet  
1875W

Ionic



Cool shot



Removable  
Air Filter



### X5 Superlite Turbo DC

- 1875 watt output
- 3 Temperature/2 speed settings
- Cool shot
- Professional quality DC motor for long life
- Ion technology for antistatic, Smooth shiny hair
- Removable air intake filter

### Accessories:

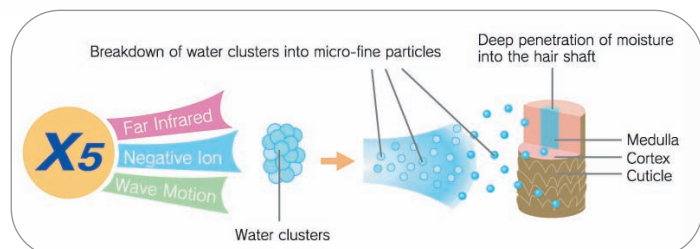
- 1 Narrow concentrator for professional styling
- Colour: Champagne/Graphite.

### Benefits of Tourmaline + Ionic Dryer:

Tourmaline + Ionic emits the largest amount of negative ions and infrared heat.

### This results in:

- Faster Drying time
- More moisture, sheen and softness
- No damage to hair
- Elimination of frizziness



X5 SUPERLITE™

Tel: (877) 643-7900 • Fax:(310)527-7979

E-Mail: mseanmiles@aol.com • Web: www.x5superlite.com